

# Electro-Pneumatic Positioner

GT-100 SERIES

- Simple zero and span adjustment
- Easy 1/2 split range setting
- Auto / Manual switch
- IP66 Weather proof



GLOBAL INSTRUMENTS

Electro-pneumatic Positioner

# Electro-Pneumatic Positioner GT 100L (Linear type)

**Description** The Electro-Pneumatic Positioner GT-100L is used for operation of pneumatic linear valve actuators by means of electrical controller or control system with an analogue signal of DC 4 to 20mA or split ranges.

## Features

- Fast response time, durability, and excellent stability
- IP 66 enclosure
- Simple zero and span adjustment
- Strong anti vibration performance
- By-pass valve (A/M switch) installed
- Air connection part is designed for detachability and it can be changed PT/NPT tapping threads in the field easily



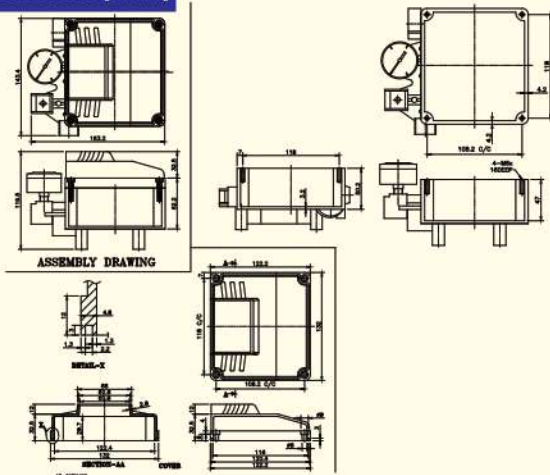
## Specifications

Model	GT 100 ( Single )	GT 100 ( Double )
Input signal	4~20mA DC	
Impedance	250 ±15Ω	
Supply pressure	0.14~0.7MPa	
Stroke	10~100mm	
Air connection	PT1/4, NPT1/4	
Gauge connection	PT1/8, NPT1/8	
Conduit	G(PF)1/2, NPT1/2	
Explosion proof type	Non-explosion proof Ex dmb IIB T5/T6, Ex dmb IIC T5/T6 Ex ia IIC T6	
Enclosure	IP66	
Ambient Temp.	Operating Temp.	-20℃~70℃ (Standard type) -40℃~70℃ (Option) -20℃~120℃ (Option)
	Explosion proof	-40℃~60℃ (T5) / -40℃~40℃ (T6)
Linearity	±1.0% F.S.	±2.0% F.S.
Sensitivity	±0.2% F.S.	±0.5% F.S.
Hysteresis	±1.0% F.S.	
Repeatability	±0.5% F.S.	
Air consumption	Below 2.5LPM (Sup=0.14MPa)	
Flow capacity	Over 80LPM (Sup=0.14MPa)	
Material	Aluminum die cast	
Weight	2.8kg	

## Product Number

Model	GT 100	L		
Acting type	Linear type	L		
Explosion proof type	Non-explosion proof	N		
	Ex dmb IIB T5/T6	P		
	Ex dmb IIC T5/T6	Y		
	Ex ia IIC T5/T6	Z		
Connection	Conduit entry	Air connection		
	G1/2	PT1/4	1	
	G1/2	NPT1/4	2	
	NPT1/2	NPT1/4	3	
Lever type	10 ~ 40mm		1	
	40 ~ 70mm		2	
	70 ~ 100mm		3	
	100~ 150mm		4	
Ambient Temp.	-20℃~70℃			S
	-20℃~120℃*			H
	-40℃~70℃			L
Option	None	Standard type		0
	4~20mA Position transmitter (Positioner is RA type) *			1
	4~20mA Position transmitter (Positioner is DA Type) *			2

## Dimension [Unit:mm]



## Internal structure



\* Must be Non-explosion proof type



**GLOBAL INSTRUMENTS**  
Electro-pneumatic Positioner

# Electro-Pneumatic Positioner GT 100R (Rotary type)

## Description

The Electro-pneumatic valve positioner GT-100R is used for operation of pneumatic rotary valve actuator by means of electrical controller or control system with an analogue signal of DC 4 to 20mA or split ranges

## Features

- Fast response time, durability, and excellent stability
- IP 66 enclosure
- Simple zero and span adjustment
- Strong anti vibration performance
- By-pass valve (A/M switch) installed
- Air connection part is designed for detachability and it can be changed PT/NPT tapping threads in the field easily



## Specifications

Model	GT 100 ( Single)	GT 100 ( Double)
Input signal	4~20mA DC	
Impedance	250±15Ω	
Supply pressure	1.4~7.0kgf/cm <sup>2</sup> (20~100 psi)	
Stroke	10~150mm	
Air connection	PT(NPT) 1/4	
Gauge connection	PT(NPT) 1/8	
Conduit Entry	PF 1/2 or G 1/2	
Explosion proof type	Non-explosion proof	
	Ex dmb IIB T5/T6, Ex dmb IIC T5/T6 Ex ia IIC T6	
Enclosure	IP66	
Ambient Temp.	Operating Temp.	-20℃~70℃ (Standard type) -40℃~70℃ (Option) -20℃~120℃ (Option)
	Explosion proof	-40℃~60℃ (T5) / -40℃~40℃ (T6)
Linearity	±1.0% F.S.	±2.0% F.S.
Sensitivity	±0.2% F.S.	±0.5% F.S.
Hysteresis	±1.0% F.S.	
Repeatability	±0.5% F.S.	
Air consumption	Below 2.5LPM (Sup=0.14MPa)	
Flow capacity	Over 80LPM (Sup=0.14MPa)	
Material	Aluminum die cast	
Weight	2.8kg	

## Product Number

Model	GT 100	R		
Acting type	Rotary Type	R		
Explosion proof type	Non-explosion proof	N		
	Ex dmb IIB T5/T6	P		
	Ex dmb IIC T5/T6	Y		
	Ex ia IIC T5/T6	Z		
Connection	Conduit entry	Air connection		
	G1/2	PT1/4	1	
	G1/2	NPT1/4	2	
	NPT1/2	NPT1/4	3	
Lever type	M6 x 34L		1	
	NAMUR		5	
Ambient Temp.	-20℃~70℃			S
	-20℃~120℃*			H
	-40℃~70℃			L
Option	None:Standard type			0
	Position transmitter(4~20mA) *			1
	With Limit switch *			2
	With Limit switch (Explosion proof type)			3
	With Position transmitter and Limit switch *			4
	With Position transmitter and Limit switch (Explosion proof type)			5
With external Limit switch mounting device				6

\* Must be Non-explosion proof type

## Internal structure



MASTER DISTRIBUTORS FOR

**MARSH BELLOFRAM** USA

**BelGAS**

Meriam Process Technologies, USA



( A Venture of Western Enterprise, USA)



**GLOBAL INSTRUMENTS**

**Head Office :**

3rd Floor, Sunrise Complex,  
Opp. SSG Hospital, Salatwada Naka,  
Vadodara - 390001 (Gujarat) INDIA.

M : +91-99980 34826

E-mail : [globalinst2014@gmail.com](mailto:globalinst2014@gmail.com)

Website : [www.globalinstrumentsindia.com](http://www.globalinstrumentsindia.com)