

# Type 3210 & 3220

## Analog Weatherproof Regulators

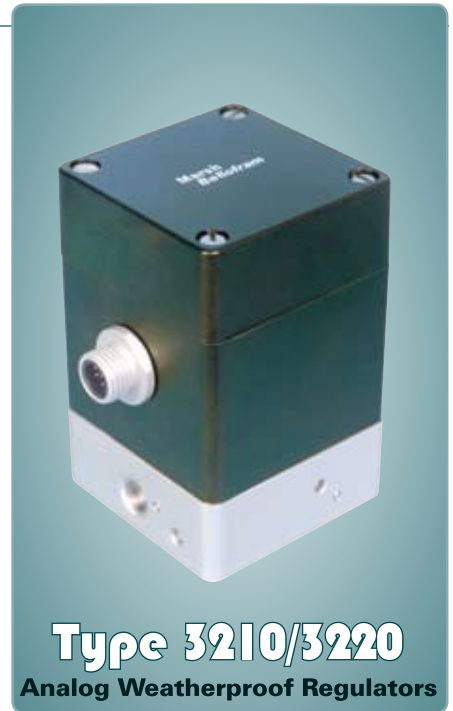
### Description

The Type 3210 single loop and 3220 double loop electro-pneumatic servo pressure controllers incorporate two solenoid valves and an internal pressure sensor for increased sensitivity and accuracy. With current or voltage signal inputs, the Type 3210/3220 controls an output pressure with an accuracy of  $\pm .5\%$  or better full scale. A wide range of output pressures available, from 29" Hg vacuum to 600 psig. With a flow of 1.25 SCFM at 100 PSI, the 3210/3220 can be used alone or in conjunction with a volume booster to achieve flow rates in excess of 2,000 SCFM. The double loop (3220) option permits 0-10 VDC feedback from a remote sensor.

Applications include: Semiconductor, Robotics Controller, Machine Automation, Tire Manufacturing and Testing, Molding and Forming Operations and a wide variety of industrial applications.

### Features

- Weatherproof Enclosure
- User Selectable Input Signal
- Analog Monitor Output
- Single Loop and Dual Loop Control
- 1.25 SCFM Flow Rate



### Type 3210 and 3220

Type 3210/3220 Ordering Information										
2	0	0	600	P	1					Number of Loops
↑	↑	↑	↑	↑	↑	↑	↑	↑	↑	1 Loop
1										2 Loop
2										
	0									Logic Output
		M								CMOS
		T								TTL
		O								Open-Collector
										Analog Control Signal
		E								0-10V
		I								4-20mA
										Lower Output Pressure
			0							Lower Limit of Output Pressure
										Pressure Units
				G						PSIG
				A						PSIA absolute
				V						Vacuum
				W						Inches of water column
										Upper Output Pressure
			600							Upper Limit of Output Pressure (PSIG)
										Mounting
					P					Pipe (in-line)
										Supply and Output Ports
						0				1/4 NPT
						1				1/4 BSPT
						2				1/4 BSPP
										Connector
								1		
										Options
								00		None
								14		12 VDC supply
								--		External Volume Booster: X2, X3, Z2, Z3, Z4, N3, N4, N6, N8, Q6, Q8, QA, QB, QC, V2, V3: see chart on page 88

Type 3210 and 3220		
Performance	Full-Scale Accuracy 0.5%	
<b>Electrical Inputs</b>		
Supply Voltage	15-24VDC (12VDC option)	
Stand by Supply Current	80 mA	
Maximum Supply Current	325 mA	
E/P Control	0-10V, 10K OHMS	
I/P Control	4-20 mA , 250 OHMS	
2nd-loop Remote Sensor Feedback	T3220: 0-10V	
<b>Electrical Outputs</b>		
Monitor Output	0-10V	
Logic Output	CMOS, TTL, Open-Collector	
<b>Pneumatic Inputs</b>		
	Max. Output PSIG (BAR)	Max. Supply PSIG (BAR)
	Up to 5 (.35)	20 (1.4)
	>5 to 15 (.35-1.03)	30 (2.1)
	>15 to 30 (1.03-2.1)	60 (4.1)
	>30 to 100 (2.1-6.9)	165 (11.4)
	>100 to 150 (6.9-10.3)	200 (13.8)
	>150 to 300 (10.3-20.7)	350 (24.1)
	>300 to 600 (20.7-41.4)	650 (44.8)
Supply Pressure		
<b>Pneumatic Outputs</b>		
Full-scale Atmospheric Pressure Ranges	1, 5, 15, 30, 100, 150, 300, 500, 600 PSIG	
	0.07, 0.35, 1.03, 2.07, 6.9, 10.34, 20.68, 34.47, 68.95 BAR	
Vacuum Pressure Ranges	30" Hg, 150 PSIA (2.1 BAR, 10.3 BAR)	
Forward Flow Capacity	1.25 SCFM (35.4 LPM)	
Exhaust Flow Capacity	1.25 SCFM (35.4 LPM)	
<b>Environmental</b>		
Operating Temperature	32-141 °F (0-60 °C)	
Media-Wetted Materials	Aluminum, copper alloys, nickel, buna-n, silicon, 316SS	
Required Accessories	6-pin micro cordset	
Recommended Accessories	DIN-rail Bracket, Panel Bracket, Power Supply, Control Knob, Remote Pressure Sensor, External Volume Booster	