

IP5500 Series Intelligent Valve Positioner



IP5500 intelligent valve positioner is mounted on pneumatic actuators. It's used to control air intake and exhaust of the pneumatic actuators to drive the valve position to the set point by calculating both data from 4-20mA DC signal and feedback position.

Technical Data	
Material	Aluminum
Power supply	24V DC \pm 10%
Set-point signal	4-20mA DC
Stroke	Linear Stroke:10-100mm Rotary Stroke:30-100°
Ambient temperature	-20°C ~ +70°C
Gas source requirement	ISO 8573-1 Class 3
Vibration resistance	0.15mm, 10Hz-60Hz, 20 cycle/axis 20m/s ² , 60Hz-500Hz, 20 cycle/axis Recommended range for control valve \leq 20 m/s ² , no resonance peak
Supply pressure	0.14-0.7MPa
Flow	75L/min (Sup=0.14MPa)
Basic error	\leq 1.0%
Hysteresis error	\leq 1.0%
Electrical connection	M20 \times 1.5
Pneumatical connection	G1/4
Protection class	IP66
Weight	2kg

Tel: +91-9998034826 | +91-8511557228 | E-mail: globalinst2014@gmail.com

GLOBAL INSTRUMENTS

Combinations



Normal rotary version



Remote rotary version



Normal linear version

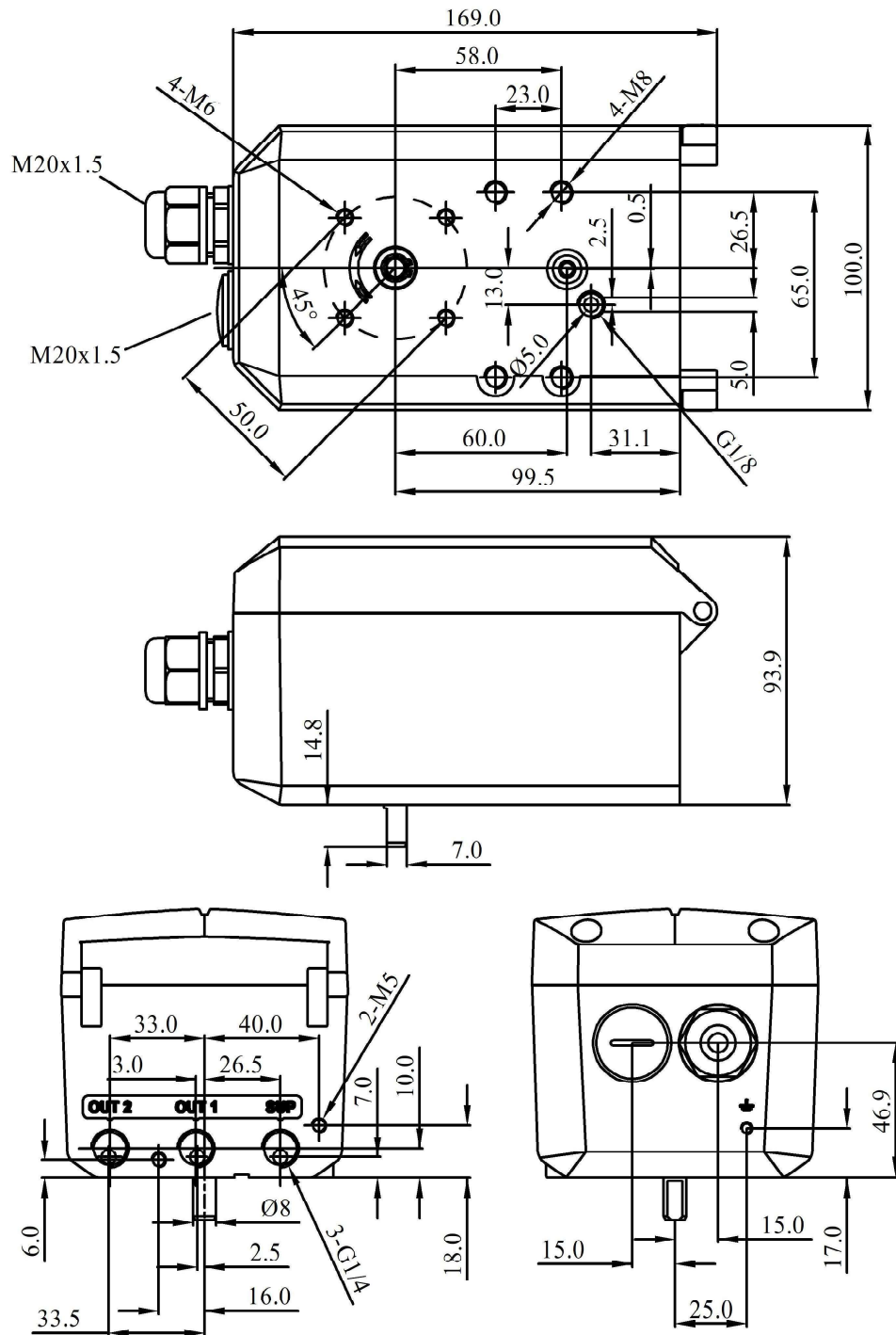


Remote linear version

Tel: +91-9998034826 | +91-8511557228 | E-mail: globalinst2014@gmail.com

GLOBAL INSTRUMENTS

Dimensions

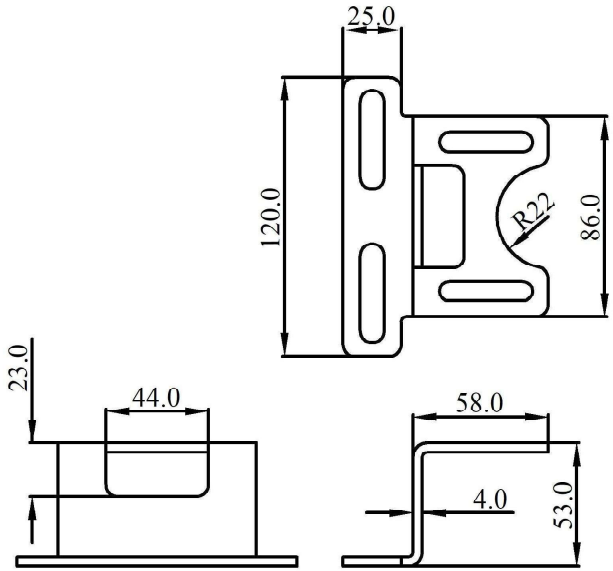


Positioner Dimensions

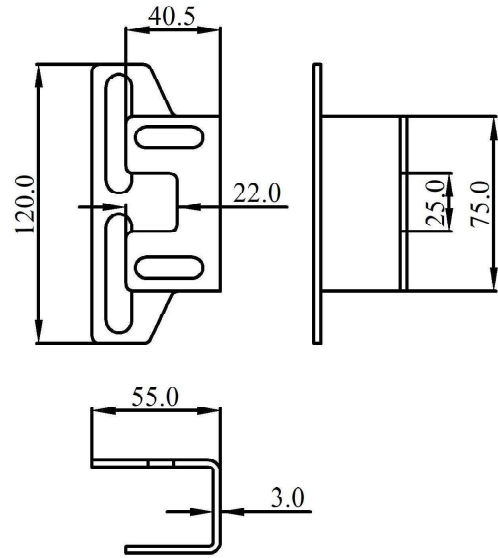
Tel: +91-9998034826 | +91-8511557228 | E-mail: globalinst2014@gmail.com

GLOBAL INSTRUMENTS

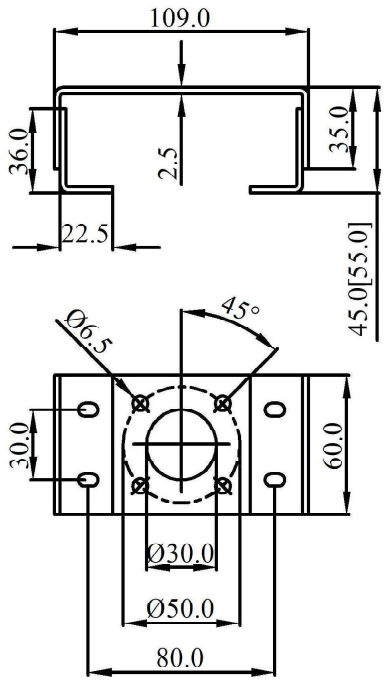
Dimensions



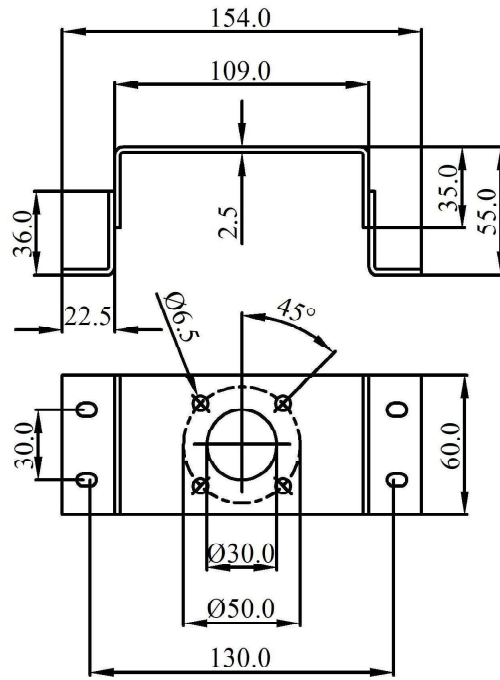
Normal linear mounting bracket



Remote linear mounting bracket



Bracket for rotary actuators(Form 1)

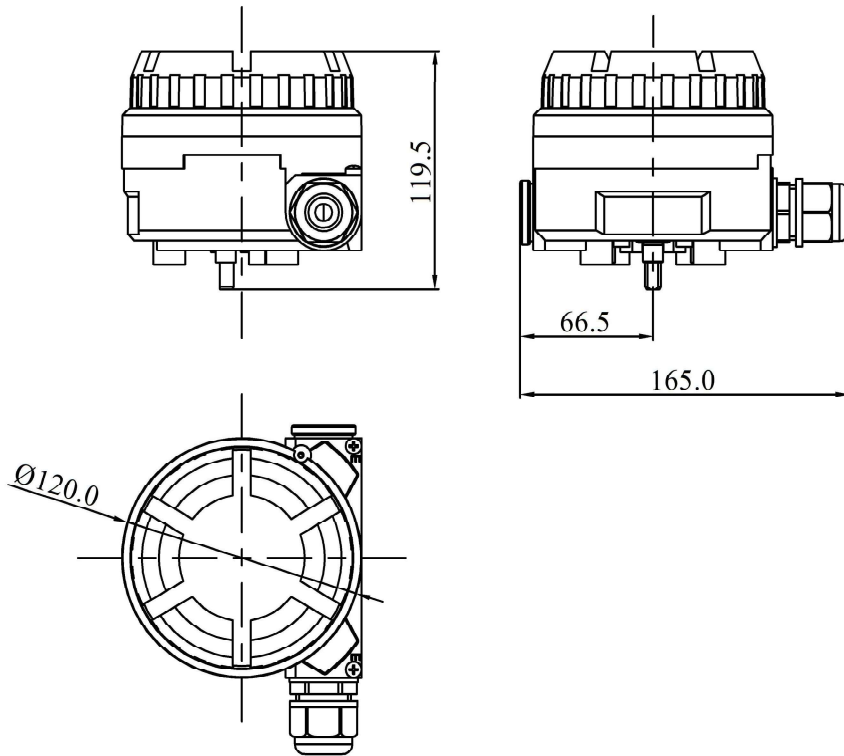


Bracket for rotary actuators(Form 2)

Tel: +91-9998034826 | +91-8511557228 | E-mail: globalinst2014@gmail.com

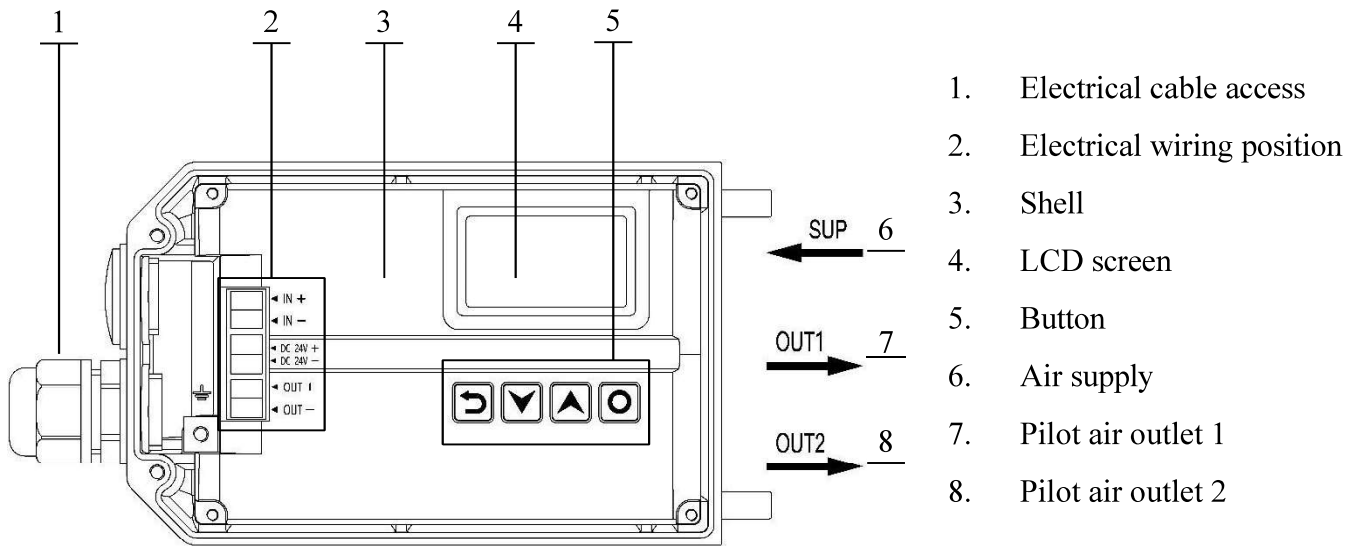
GLOBAL INSTRUMENTS

Dimensions

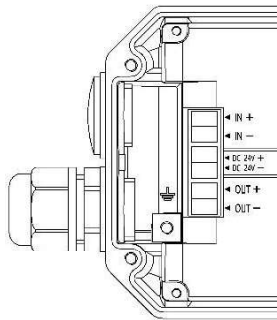


Dimensions of remote type sensor

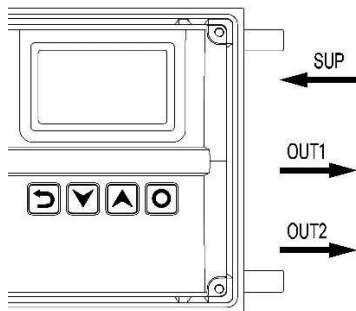
Structure



Electrical connections and pneumatic connections



Electrical	Description
IN+	4-20 mA set-point signal +
IN-	4-20 mA set-point signal -
DC 24V +	Power supply DC 24V +
DC 24V -	Power supply DC 24V -
OUT+	4-20 mA feedback signal +
OUT-	4-20 mA feedback signal -

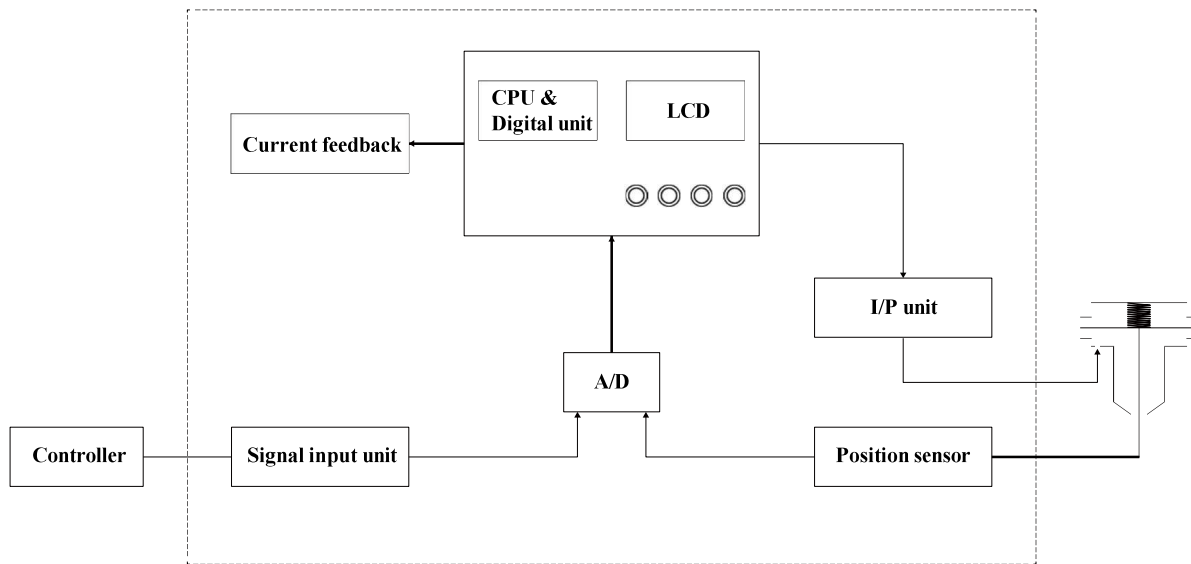


Pneumatical	Description
SUP	Air supply enter
OUT1	Pilot air outlet 1
OUT2	Pilot air outlet 2

Tel: +91-9998034826 | +91-8511557228 | E-mail: globalinst2014@gmail.com

GLOBAL INSTRUMENTS

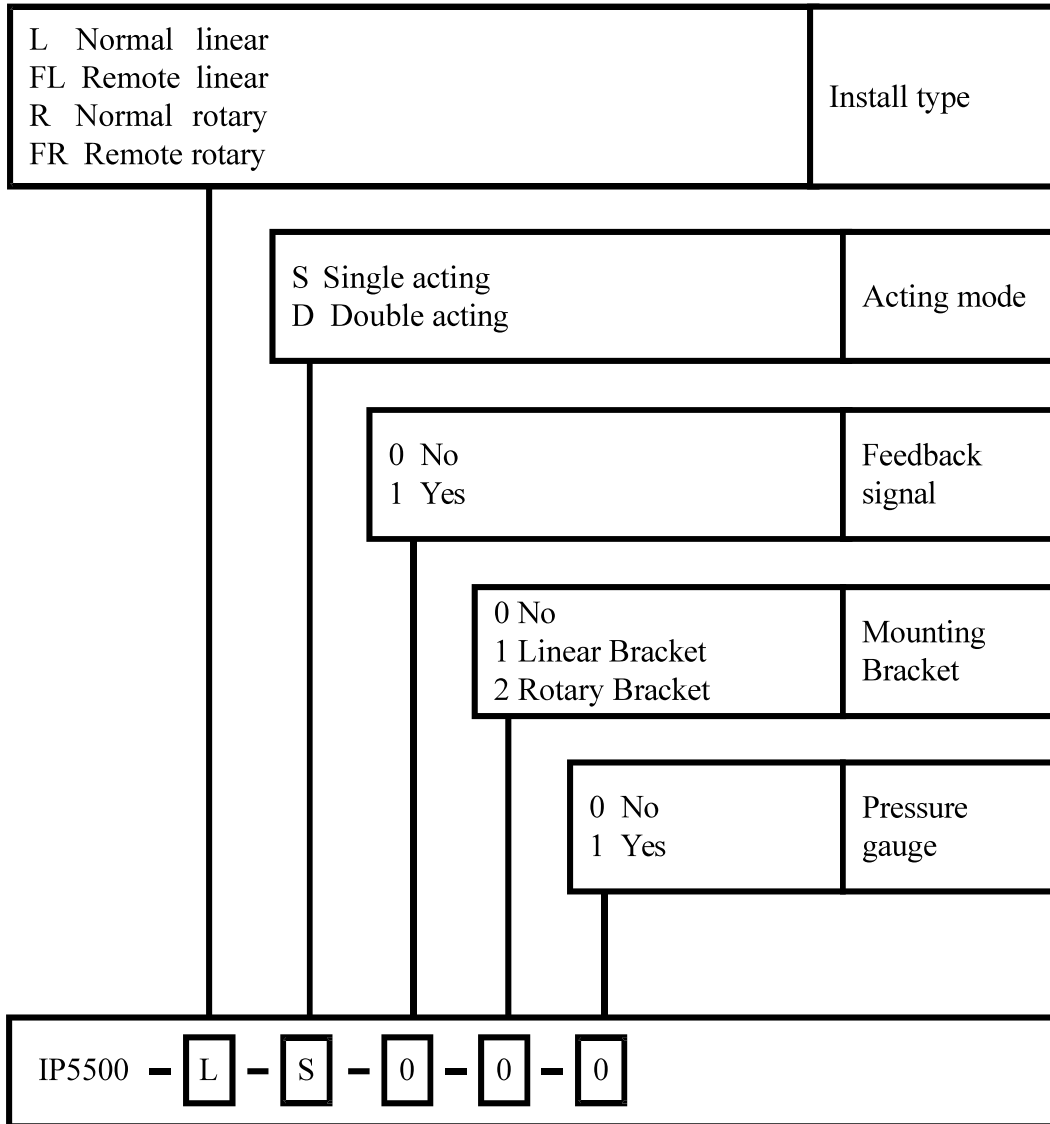
Principle Block Diagram



Additional Software Functions

- Calibrating the set-point signal.
- Setting for dead band zone
- Sealing function for position controller.
- Limit of the mechanical stroke range.
- Selection of the transfer characteristic between set-point value and stroke.
- Selection of signal direction.
- Selection of stroke direction.
- Factory settings.

Selection and Ordering Data



Tel: +91-9998034826 | +91-8511557228 | E-mail: globalinst2014@gmail.com

GLOBAL INSTRUMENTS

3rd Floor Sunrise Complex, Opp. SSG Hospital, Salatwada Naka, Vadodara, Gujarat, India – 390001

GST No: 24AAFPU4502N1Z1